

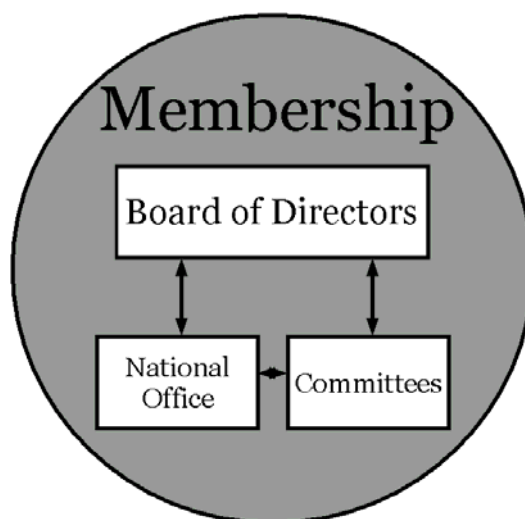
Registry of Interpreters for the Deaf, Inc.
Affiliate Chapter Relations Committee

Affiliate Chapter Handbook
Third Edition
Section 2

RID Structure:
Where am “I” in RID?

RID Structure

RID has a four part structure which consists of the affiliate chapter structure, national committee structure, the National Office, and the Board of Directors.



RID Affiliate Chapters

Affiliate chapters are one part of the overall organizational structure of RID. For the most part, there is one chapter per state. However, some states have multiple affiliate chapters and some affiliate chapters have local chapters. Chapters initiate local programs and activities as well as work to accomplish national and regional goals. Affiliate chapters may act together cooperatively, often as a region, for example, in sponsoring a regional conference, or in passing state legislation.

While the affiliate chapters are autonomous entities, their memberships overlap with national membership. Under the dual membership agreement between the national organization and the affiliate chapters, a voting member of the affiliate chapter must be a member at the national level; equally, a voting member of the national organization must be a member of an affiliate chapter. Because they are affiliated with the national organization and are part of that organization, affiliate chapters agree to certain standards and accept specific responsibilities within the organization. The affiliate chapters provide input to and accept direction from region representatives.

National Committees

Committees accomplish specific tasks assigned by the Board of Directors, often as the result of motions passed by the membership. While committee members may work directly with individual RID members and affiliate chapter leadership, they do not govern chapter business or activities. A national committee can also be a resource to affiliate

chapters. For example: an affiliate chapter sometimes calls upon the bylaws committee for advice.

Committees focus on national level projects and report to the Board of Directors. The RID president appoints committee chairs and members based upon letters of interest and recommendations from members.

National Office

The National Office conducts the day-to-day business of the organization under the leadership of the RID executive director. The National Office is an instrument of the Board of Directors. Through the Executive Director the employees take direction from the Board of Directors and implement Board policy. The National Office serves as a resource to individual RID members, national committees, and the affiliate chapter structure. The National Office establishes policies and procedures which allow it to effectively complete its tasks.

Board of Directors

The Board of Directors is the governing body of the RID. The members of the Board are elected by the RID membership in national and regional elections. The Board consists of executive officers and region representatives. The Board of Directors is answerable to the membership. This group implements policy and directs the business of the organization through the National Office, appointed committees and the affiliate chapter organizations.